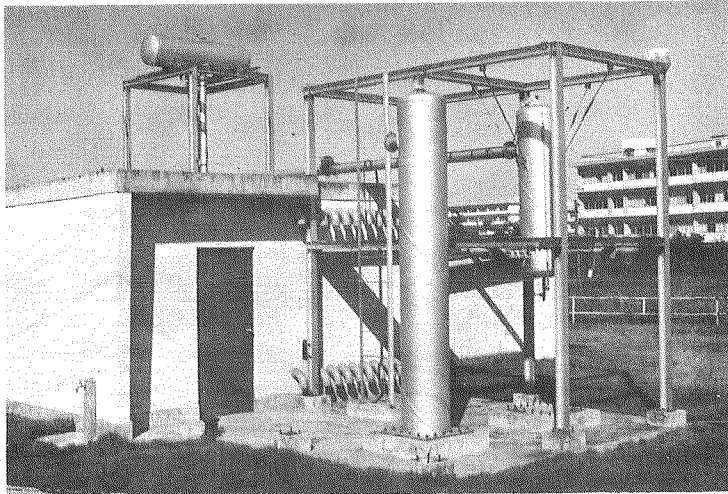


## NEWS

\* A chemical engineering plant model, which consists of a flat R. C. structure with single basement floor, frame structures, a hanged vessel, pipings, tower and corn-roof-type water storage (ref. Photo) was completed in Chiba Field Station. The responses of these items to natural earthquakes have been observed since September 1971 by Plant Engineering Laboratory (Professor Shibata and others). Displacement waves and torsional waves have been also observed and analyzed.



\* Associate Professor S. Kawamata attended the 2nd US-Japan Seminar on Matrix Methods of Structural Analysis and Design held in Berkeley in August, 1972, and presented the following paper:

Y. Hangai and S. Kawamata, "Perturbation Method in the Analysis of Geometrically Nonlinear and Stability Problems", Advances in Computational Methods in Structural Mechanics and Design, ed. J. T. Oden, R. W. Clough and Y. Yamamoto, UAH Press, University of Alabama in Huntsville, 1972.

\* Professor Kubo (Institute of Industrial Science) and Professor Hakuno (Earthquake Research Institute) were invited to the Institute of Earthquake Engineering and Engineering Seismology, University of Skopje, as UNESCO consultants. They stayed in Skopje from October to November, 1972, and gave lectures on earthquake resistant design and practice.

\* Professor Tajimi (Nihon University) was in Yugoslavia from September to November, 1972, for the instruction of the method to investigate the